



# Ridge Lines

*A newsletter for parents, students and friends of ERHS*

## INSIDE THIS ISSUE:

*Principal's Message*.....1

*Calendar of Coming Events* .....2

*VISSTA Award* .....2

*HSPE: What You Need to Know*.....3

*Culminating Project Update*.....4

*Counseling/Career Center News*.....5

*School Programs & Operations Levy*.6

*HIV/AIDS Curriculum Preview*.....6

*In-District Transfers*.....7

*Out-of-District Student Choice*.....7

*Health Room News*.....7

*ERHS Theatre Presents* .....8

## FROM THE FRONT DESK

### Jaguar School Community-

As we embark on the second semester of the 2009-2010 school year, I want to take just a moment to remind each of you, each of us, of our school improvement goals for this year. The caring educators at Emerald Ridge are committed to making high school both memorable and meaningful for your student and your family. Specifically, we are committed to:

- Increase student performance on the High School Proficiency Exam (HSPE)
- Decrease the number of failing grades recorded at each semester grade report
- Increase the graduation rate of this senior cohort
- Increase the number of students engaged in rigorous academic coursework
- Increase parent/teacher/student communication

I am passionate about these goals because I know that it will take improvement in each area to ensure that each of our students is prepared for what awaits after high school graduation. In the tough economic times that each of us face today, it is apparent to me that we must prepare each of our students to continue their learning after high school. Regardless of whether they head to a university, two-year college, technical college, the military, or apprenticeships; our students must be prepared to continue learning in order to face the challenges headed their way.

This “college-ready” attitude is a foundation to the success of each and every student at Emerald Ridge and I pledge that we will continue to make improvements in the ways we work with your student and in the effectiveness of our partnerships with you...our students deserve it.

Brian Lowney  
Principal



## Our Vision

*Emerald Ridge High School*

1. *Every student will be well-known, both personally and academically, by at least one adult staff member.*
2. *Every student will be challenged to meet rigorous academic standards in an appropriate educational program.*
3. *Every student will be provided with opportunities to experience the benefits of community membership and to develop and practice leadership skills.*
4. *Every student will be prepared for whatever he/she chooses to do after graduation, with a strong transcript, a career pathway, a plan and a portfolio.*

## CALENDAR OF COMING EVENTS



### FEBRUARY 2010

- 3 PRIDE Cabinet Meeting, 7:00 pm, Library
- 6 Winter Formal, 8:00 pm, Commons
- 6 ACT Test
- 9 Site Council, 5:00 pm, Staff Lounge
- 12 Mid-Winter Break - No School
- 15 President's Day - No School
- 26-27 Musical, 7:00 pm, Auditorium

### MARCH 2010

- 3 PRIDE Cabinet Meeting, 7:00 pm, Library
- 4-6 Musical, 7:00 pm, Auditorium
- 9 Site Council, 5:00 pm, Staff Lounge
- 13 SAT Test
- 17 Winter Instrumental Concert, 7:00 pm, Auditorium
- 17 PRIDE General Membership Meeting, 7:00 pm, Library
- 16-18 HSPE Week #1 (Reading & Writing)
- 24 Senior Write Night #3, 6:00 pm, Library
- 29-31 Spring Break - No School

### APRIL 2010

- 1-2 Spring Break - No School
- 7 PRIDE Cabinet Meeting, 7:00 pm, Library
- 8-10 Senior Directed One-Acts, 7:00 pm, Auditorium
- 10 ACT Test
- 13&15 HSPE Week #2 (Math & Science)
- 13 Site Council Meeting, noon, WWF
- 17 Spring Tolo, 8:00 pm, Commons

## VISSTA AWARD

The VISSTA Award was created to recognize advisory students who reflect many of the positive attributes of our advisory program and school such as: Service, Leadership, Integrity, Character and Responsibility. Advisors have selected students who exhibited these characteristics for the first semester and the winners are:

|                         |                     |
|-------------------------|---------------------|
| Amaya Adams             | Yong Min (Clara) Ko |
| Rachel Allen            | Nick Lavorato       |
| Landon Ayala            | Ryan Leach          |
| Kelsey Baker            | Arden Leete         |
| Sarah Barnard           | Nico Lopez          |
| Thomas Brook            | Ter Mal             |
| Cameron Calton          | Nicole McMenamin    |
| Ashley Carter           | Brandon Meade       |
| Daphne Chen             | Elizabeth Morrison  |
| Diana Conde             | Arianna Ortega      |
| TJ Cope                 | Rob Peacock         |
| Kirstee Crossland       | Kaytie Proff        |
| Marissa DeVous          | Taylor Reighard     |
| Shannon Dexter          | Sarina San Nicolas  |
| Joey Erickson           | Stephanie Sandoval  |
| Christian Estrada       | Morgan Slack        |
| Cisco Gonzalez          | James (JT) Smith    |
| Natalie Gough (Griffin) | Jordan Speckhardt   |
| Chris Hachey            | Kayla Sprinkle      |
| Michael Hacker          | Madison Stutz       |
| John Hefner             | Nicole Summers      |
| Jeanee Henson           | Earl Taylor         |
| Nick Hugdahl            | Jake Taylor         |
| Kaitlyn Humphrey        | Megan Turner        |
| Lisa Hwang              | Annabel Warnell     |
| Natalie Jerome          | Jenae Wilczynski    |
| Taylor Klinefelter      | Chris Cagaitan      |

Tuesday School ..... 1 hour

Suspension ... One day or more

Showing up for class on time ...

**PRICELESS!**



## **HSPE REPLACES WASL** ***www.WAtesting.com***

Beginning this March, the high school Washington Assessment of Student Learning Exams (WASL) will be replaced by the High School Proficiency Exams (HSPE). The HSPE Reading, Math, and Science tests are shorter in length than the WASL and will take just one day each instead of two with the previous WASL. For now, writing will still take two days. There will be no on-line testing at Emerald Ridge this year.

The HSPE name conveys the goal of the test: to measure a student's proficiency of basic skills. Students in the classes of 2010-2012 must pass a reading and writing assessment to be eligible to graduate, however, students who do not pass the math HSPE are required to pass two math credits after their 10th grade year in order to earn a diploma. Students must attempt the math test at least once. If a student has already passed a specific assessment via the WASL (i.e., reading), they will not have to take the HSPE in that content area.

Students must pass Reading, Writing, and Math\*.

*\*Current seniors who have not passed the Math portion of the WASL (HSPE), must be currently enrolled in, and complete, 1.0 credit of math. They will be advised to take the April 13 Math HSPE.*

*\*Current juniors who have not yet passed the Math portion of the WASL (HSPE), must complete 2.0 credits of math AND will be required to take the April 13 Math HSPE.*

### **2010 HSPE Testing Dates (7:40 – 10:20)**

**Reading:** March 16, 2010

**Writing I:** March 17, 2010

**Writing II:** March 18, 2010

**Math:** April 13, 2010

**Science:** April 15, 2010

### ***When are the make-up dates?***

Across the state, all students will take each test at the same time on the same day. Summer testing is in August.

***What happens if I haven't passed the WASL/HSPE but have passed all of my other graduation requirements?***

You will not earn a diploma.

***What happens if I passed the reading and writing WASL/HSPE but not math and earned only 1.5 math credits after my sophomore year?***

You will not earn a diploma.

***What if I just recently enrolled at ERHS?***

All sophomores will take all four of the spring tests. New juniors and seniors who have previously taken and passed a state WASL-like test may appeal to use those scores provided they meet our deadlines. However, we feel it is in the best interest of these students to take spring HSPE tests.

***Can I use passing WASL/HSPE scores for credit retrieval?***

Yes. Reading (.5cr English 9 or 10), Writing (.5cr English 9 or 10), Math (.5cr Algebra I or Geometry), Science (.5cr Physical Sci 9 or Biology 10).

***For more information:***

Graduation Requirements:

<http://www.k12.wa.us/GraduationRequirements>

CAA Options:

[www.k12.wa.us/assessment/CAAoptions](http://www.k12.wa.us/assessment/CAAoptions)

Appeals and Waivers:

[www.k12.wa.us/assessment/Appeals](http://www.k12.wa.us/assessment/Appeals)

For questions regarding your child's graduation status or general ERHS testing information please contact Lisa Kusche, ERHS On-Time Graduation Specialist, at [kuschelm@puyallup.k12.wa.us](mailto:kuschelm@puyallup.k12.wa.us) or 253-435-6315



## ***CULMINATING PROJECT UPDATE***

The Culminating Project seeks to build a bridge for students between educational skills and their relevance in the real world. The four phases of this project include the Community Experience Component, Written Component, Portfolio Component and the Presentation Component. The Culminating Project is a district graduation requirement; students must successfully complete all four components.

### ***Community Experience - Involve Yourself***

The Community Experience Component is designed to be an active, community-based learning and/or service experience that requires students to apply their school skills in real-life settings. The Community Experience includes at least 20 hours of non-paid work outside of the school day and must be supervised by a community mentor. Students can begin their Community Experience June of their sophomore year after completion of their job shadow requirement.

### ***Written Component - Challenge Yourself***

Writing is a crucial skill necessary for students to be successful in their academic and professional careers. Therefore, the Written Component is a key element of the Puyallup School District's Culminating Project. As such, students will be asked to demonstrate their writing competencies in the following manner: An "on-demand" writing assignment in 12th grade completed as an English assignment, a multi-paragraph personal essay in 11th or 12th grade completed as an English assignment, and an Expository or Persuasive Research Paper from 10th, 11th or 12th grade from any curricular area.

### ***Portfolio Component - Present Yourself***

The Portfolio Component is a collection of evidence of the work, knowledge, skills, and experiences accrued in grades 9-12. Students will also include additional items that are reflective of their unique interests and talents.

### ***Presentation Component - Express Yourself***

The final presentation of the Culminating Project will center on a comprehensive portfolio that each student develops which is a representative example of the student's body of work, background, future

plans and achievement in and out of the classroom. The portfolio shows the student's long range planning towards a final outcome preparing the student for a "next step" after high school.

The project is evaluated on a pass/fail basis. To ensure success, it is essential that students complete tasks for the Culminating Project satisfactorily by the established time line. If you have any questions, please contact the coordinator, Patti McMullan.

### ***Important Culminating Project Timeline Class of 2010***

#### **June 2009 (Past Due)**

- Community Experience Plan (typed)
- Community Mentor Agreement

#### **January 26, 2010**

- Senior Write Night - 6 pm, Library (Opportunity for seniors to complete written component - on-demand write, research paper, personal essay.)

#### **January 29, 2010**

- Community Experience Time Log due
- Mentor Evaluation due
- One-two page typed reflection on project due

#### **February 2010**

- Presentation training for all seniors

#### **March 16-18, 2010**

- 7:30 am - 10 am Portfolio Workshop in CCC

#### **March 16, 2010**

- ASVAB Testing

#### **March 24, 2010**

- Senior Write Night

#### **April 6, 2010**

- Portfolios are due for all seniors
- Practice speeches begin for all seniors

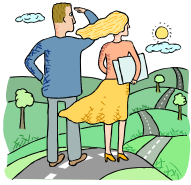
#### **April 13, 2010**

- 7:30 am - 10 am Portfolio Workshop in CCC

#### **May 11 & 13, 2010**

- Senior Board Presentations

**Patti McMullan, Culminating Project Coordinator**  
**Phone 253-435-6312, Fax 253-435-6310, E-mail plmcmullan@puyallup.k12.wa.us**



## **NEWS FROM THE COUNSELING AND CAREER CENTER**

### **STUDENTS SELECT COURSES FOR NEXT YEAR**

During the months of February and March, ERHS sophomores and juniors will be registering for their courses for the 2010-11 school year. A number of activities and lessons are planned for advisory and JAG time to equip students to make good choices that will prepare them for both graduation and their post-high school plans. Students will be reviewing graduation requirements, college entrance requirements and career pathway honors requirements before they make their final selections.

Registration will be facilitated in advisory sessions during this time. Counselors will also be on hand during lunches to assist in course selection. We hope you will work closely with your sons and daughters to select their courses carefully. We plan our schedule according to their requests, making schedule changes difficult later on. It is also very important that students pass ALL of their classes this semester. Students who fail classes now will not only be limiting their selections for next year, but they may also be putting their graduation in jeopardy.

### **Parent Orientation Meeting For Running Start Students**

**Coming in April**

**Look for further  
information to come.**

### **SCHOLARSHIPS AND FINANCIAL AID INFO**

ERHS seniors will receive the 2010 Local Scholarships Bulletin during advisory on February 23. Over 90 scholarships available to ERHS graduating seniors who are pursuing post-high school education are included in the bulletin. The deadline for all of the scholarships is Friday, March 19 at 2:30pm. No late applications will be accepted. The booklet, standard application form, and other scholarship opportunities can be accessed online at [www.erhs.org](http://www.erhs.org). Click on "Academics", then on "Scholarships and Financial Aid". Seniors planning on attending college this fall and who would like to be considered for financial aid should make sure they complete the FAFSA form as soon as possible after January 1st. FAFSA information and application can be found at [www.fafsa.ed.gov](http://www.fafsa.ed.gov). For hands-on help to complete the FAFSA, go to [www.collegegoalsundaywa.org](http://www.collegegoalsundaywa.org).



### **COLLEGE & SERVICE FAIR**

**March 2 & 4  
9:00 - 10:30 am  
ERHS Gym**



### **ADVANCED PLACEMENT EXAMS**

Advanced Placement exams will be given from May 3 to May 14. Students wishing to take an AP exam must pay the bookkeeper a non-refundable fee of \$86 per test on or before Friday, March 19. Students who qualify for free and reduced lunches may take the exams at a significantly reduced rate. Those receiving high scores on these national exams may qualify for college credit. If you have any questions, please call Mrs. Highley, the exam coordinator, at 435-6553.

---

## ***SCHOOL PROGRAMS AND OPERATIONS REPLACEMENT LEVY ELECTION***

---

On February 9, 2010, Puyallup School District will be asked to replace an expiring four-year school programs and operations levy.

**Q.** When is the replacement levy election, and how do I vote?

**A.** The election will be held February 9, 2010 and will be conducted by mail-in ballot only. Ballots are scheduled to be mailed to voters on January 22, 2010.

**Q.** What is a school programs and operations levy?

**A.** School programs and operations levies provide money to help pay for day-to-day school programs and operations such as teachers and support staff, smaller class sizes, school safety and security, programs for students with special needs, instructional materials including textbooks, music and the arts, transportation, and athletics and other extracurricular activities.

**Q.** Is this a new tax?

**A.** No. The proposed four-year school programs and operations levy replaces the current four-year levy, which expires in December 2010. By law, school levies can only be for a maximum of four years and must be approved by a public vote.

**Q.** Why does our school district need a school programs and operations replacement levy?

**A.** The state Legislature's funding formula for basic education falls short of providing all that is required to educate students at the current levels of staffing and services. To make up the difference, this district, like others in the state, submits levies to voters to support acceptable levels of staffing and essential educational programs.

**Q.** What percent of the budget does the replacement levy fund?

**A.** The local school programs and operations levy pays for approximately 21 percent of the school district's \$197 million annual budget, filling the gap between state and federal funds and supporting educational programs and services for nearly 22,000 students in 32 schools. About one in every five staff members hired by the district is funded with local levy dollars.

**Q.** What is the cost to taxpayers?

**A.** The estimated annual tax rate is \$3.40 per \$1,000 of assessed valuation, which is three cents less than the rate approved by voters in 2006.

**Q.** Why is the district running a levy election during such difficult economic times?

**A.** The Puyallup School District has never operated without local levy money. The current school programs and operations levy expires at the end of 2010, which means the district must present the ballot measure to voters if it is to be renewed. As state funding for schools continues to decline, dependence on local levy dollars continues to grow.

For more information about the 2010 school programs and operations replacement levy, visit the Puyallup School District Web site at [www.puyallup.k12.wa.us](http://www.puyallup.k12.wa.us), send an e-mail message to [election@puyallup.k12.wa.us](mailto:election@puyallup.k12.wa.us), or call (253) 841-8703.



---

## ***HIV/AIDS CURRICULUM PREVIEW***

---

The Puyallup School District invites parents and/or guardians of elementary students to preview the district's approved Human Growth and Development and HIV/AIDS curricula for students in grades four, five and six.

The preview will be held from 6 to 8 pm on February 10 in the Puyallup High School Commons, 105 Seventh St. S.W. in Puyallup. Parents wishing to exclude their child from the HIV/AIDS curriculum required by the state must preview this curriculum and sign an exclusion form.

Questions or concerns may be shared during this parent information meeting, with a child's teacher, or by contacting Rick Wells, director of athletics, health, and fitness at (253) 841-8785.

---

## ***IN-DISTRICT STUDENT TRANSFER***

---

In-district students who wish to attend a school other than their attendance area school for the 2010-2011 school year need to submit their Intra-District Transfer Application by January 10, 2010 or the next school business day.

Transfer applications are available in the main office at all schools or from the receptionist at the district office.

In the past, some schools have reached enrollment capacity and have been unable to accept intra-district transfers. Again, this is a possibility for the 2010-2011 school year.

This is an annual process that must be completed whether or not a student is already on a transfer. Students already attending PAGE do not need to submit a waiver renewal. For additional information, contact Director of Student Learning Barb Pope at (253) 841-1301.

---

## ***OUT-OF-DISTRICT STUDENT CHOICE***

---

Students who live out of the district and are currently enrolled in the Puyallup School District must complete a "Non-Resident Enrollment Application." A "Release of Attendance" from the resident school district is required and must accompany the application form.

In-district and out-of-district applications should be submitted to Barb Pope at 302 2nd St. S.E., Puyallup, WA 98372 by January 10, 2010 or the next school business day for optimal consideration.

---

## ***ATHLETIC ELIGIBILITY FOR TRANSFER STUDENTS***

---

Prior to registering with and/or attending a high school, any student granted an intra-district transfer of schools within the school district for board-approved reasons is permitted to participate in sports at the transfer school with full athletic eligibility. Any high school student athlete who rescinds the transfer and enrolls in a different high school is athletically ineligible for varsity sports for one calendar year (from the enrollment date).

---

## ***NEWS FROM THE HEALTH ROOM***

---

As of July 2005 schools in Washington are required to provide information on meningococcal disease to parents or guardians of all students entering Grades 6-12.



Meningococcal disease is a serious infection of the brain (meningitis) and blood caused by a type of bacteria. Fortunately, this life-threatening infection is rare - only about 75 people are infected each year in Washington. Adolescents and young adults are more likely to get meningococcal disease, especially those living in group settings, like college dorms.

A vaccine is available that can protect your child against the most common types of bacteria that cause meningococcal disease. One dose of meningococcal vaccine is recommended for all adolescents ages 11-12 years as part of their pre-teen health check-up. The vaccine is also recommended for all adolescents ages 13-18 who have not previously been vaccinated. College freshmen living in dorms are at increased risk for meningococcal disease and should get vaccinated before starting college if they didn't get the vaccine at a younger age. The meningococcal vaccine is not required for school or college attendance.

Here are some other ways to prevent the spread of meningococcal disease:

- Practice good hygiene (regular hand washing, covering coughs and sneezes, etc.)
- Do not share items such as eating utensils, glasses, cups, water bottles, drinks, lip gloss or toothbrushes, because they spread meningococcal disease and other bacteria and viruses.

We encourage you to learn more about meningococcal disease and how to prevent it. More information on meningococcal disease, the vaccine, and other recommended immunizations is available on the following web site:

### **Washington State Department of Health Immunization Program**

Meningococcal information:

<http://www.doh.wa.gov/cfh/immunize/vaccine/meningococcal/default.htm>

Emerald Ridge High School  
Puyallup School District  
12405 - 184th Street East  
South Hill, WA 98374

NON-PROFIT ORG.  
U.S. POSTAGE  
PAID  
PUYALLUP, WA 98371  
PERMIT #91

Return Service Requested

*ERHS Theatre Presents*



**January 28, 29, 30**

**Adults & Students w/o ASB - \$7.00  
Students with ASB & Under 12 - \$5.00**



**Les Miserables**

**February 26, 27 and  
March 4, 5, 6**

**Adults & Students w/o ASB - \$14.00  
Students with ASB - \$12.00  
12 and Under & Seniors - \$10.00  
Reserved Seating**